

Baddeley Hall Road Baddeley Green Stoke-On-Trent ST2 7LE



Offers In Excess Of £170,000

Baddeley Hall Road, Baddeley Green, Stoke-On-Trent, ST2 7LE

Are you sitting comfortably, then I will begin
This is the start of your next chapter, a great property to live in
In a popular location and a great size throughout
This is an ideal family home, of that there is no doubt!
With stunning kitchen/diner, lounge and generous bedrooms of THREE
Beautiful gardens that you must see!
Demand for viewings here is sure to be great
So call us today and arrange your viewing date!

This is a property that is sure to be popular. Located in sought after Baddeley Green, this THREE BEDROOM semi house is a perfect family home. The ground floor boasts a good sized dual aspect lounge and a stunning fitted kitchen/diner. The first floor there are three bedrooms as well as a modern shower room. Externally, there is a low maintenance frontage. Good sized landscaped rear garden. This property is ideally located in walking distance to local primary and secondary schools, as well as bus stops, shops and other amenities. If you want to make this property your new home, call us now to arrange your viewing as early internal inspection is highly recommended.

Entrance Hallway

You are welcomed by the composite door to the front aspect. Useful cupboard with plumbing for automatic washing machine and worktop housing tumble dryer.

Lounge

19'7" x 9'10" (5.97 x 3.00)

Double glazed bow window to the front aspect and double glazed window to the rear aspect. Feature surround inset and hearth, Radiator.

Kitchen/Diner

16'5" x 11'0" narrowing to 6'3" (5.02 x 3.36 narrowing to 1.91)

Arguably the most significant room in any home this chic and sophisticated kitchen will not disappoint. Beautifully presented fitted kitchen with a range of contemporary wall and base units, integrated appliances include induction hob, extractor hood over, built-in oven, microwave, dishwasher and fridge/freezer. One and a half inset sink with single drainer and mixer tap. Double glazed window to the side and double glazed French doors with access into the rear garden. Radiator. Space for dining table. Inset ceiling spot lights. Useful cupboard.



First Floor

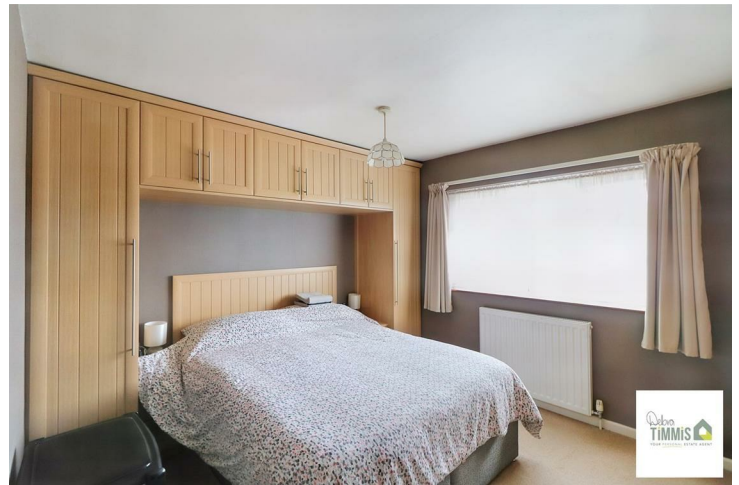
Landing

Loft access with ladder.

Bedroom One

10'3" x 9'11" to robe (3.14 x 3.04 to robe)

Double glazed window to the front aspect. Fitted wardrobes, bedside drawer sets and built-in wardrobe. Radiator.



Bedroom Two

13'8" x 9'0" (4.19 x 2.76)

Double glazed window to the rear aspect. Radiator.



Bedroom Three

10'5" x 6'4" (3.19 x 1.95)

Double glazed window to the front aspect. Radiator.



Shower Room

7'1" x 4'6" (2.18 x 1.38)

Stylish and modern suite comprises, shower cubicle housing mains shower, combination vanity wash hand basin and WC. Heated towel rail. Double glazed window. Inset ceiling spot lights.

Externally

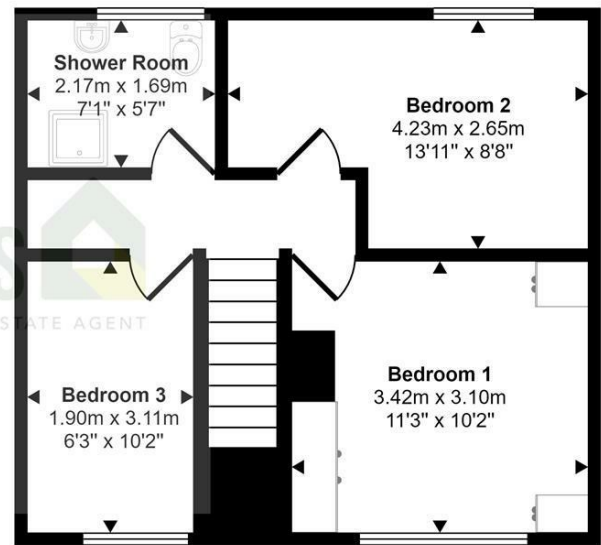
Low maintenance frontage with artificial lawn. Shared access. Enclosed landscape rear garden with patio seating areas and planted beds.



Approx Gross Internal Area
78 sq m / 844 sq ft



Ground Floor
Approx 40 sq m / 431 sq ft




First Floor
Approx 38 sq m / 413 sq ft

This floorplan is only for illustrative purposes and is not to scale. Measurements of rooms, doors, windows, and any items are approximate and no responsibility is taken for any error, omission or mis-statement. Icons of items such as bathroom suites are representations only and may not look like the real items. Made with Made Snappy 360.



Tenure: Freehold
Council Tax Band: A

Energy Efficiency Rating		
	Current	Potential
Very energy efficient - lower running costs		
(92 plus) A		84
(81-91) B		
(69-80) C		
(55-68) D	66	
(39-54) E		
(21-38) F		
(1-20) G		
Not energy efficient - higher running costs		
England & Wales		EU Directive 2002/91/EC 

Debra Timmis Estate Agents for themselves and for the vendors or lessors of this property whose agents they are give notice that (i) the particulars are set out as a general outline only for the guidance of intending purchasers or lessees, and do not constitute, nor constitute part of an offer or contract; (ii) all descriptions, dimensions, references to condition and necessary permissions for use and occupation, and other details are given without responsibility and intending purchasers or tenants should not rely on them as statements or representations of fact but must satisfy themselves by inspection or otherwise as to the correctness of each of them; (iii) no person in the employment of Debra Timmis Estate Agents has any authority to make or give any representation or warranty whatsoever in relation to this property.